

TWENTIETH SUNDAY OF ORDINARY TIME

Gregorian Chant for the
English Propers of the Mass

Antiphons of the Roman Missal

by

Columba Kelly, OSB
Sacrae Musicae Doctor
Monk of Saint Meinrad Archabbey

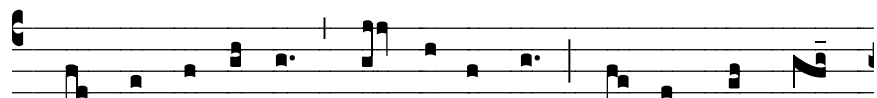
--pre-publication release--

Text: © 1989 ICEL All Rights Reserved.
Music: © Saint Meinrad Archabbey. All Rights Reserved.

TWENTIETH SUNDAY OF ORDINARY TIME

INTROIT

Ps 84:10-11



4. God, our pro-tec-tor, keep us in mind; al-ways give strength



to your peo-ple. For if we can be with you e-ven one



day, it is bet-ter than a thou-sand with-out you.

GOSPEL ACCLAMATION



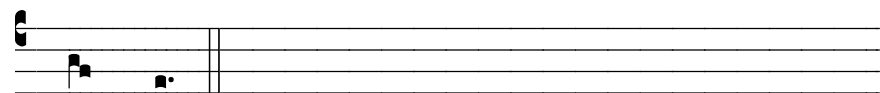
7. Al- le- lu- ia, al- le- lu- ia, al- le- lu- ia.

COMMUNION

Ps 129:7



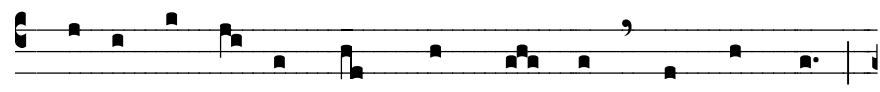
3. With the Lord there is mer- cy, and full- ness of re-



demp- tion.

-OR-

Jn 6:51:52



8. I am the liv- ing bread from heav- en, says the Lord;



if an- y- one eats this bread he will live for e- ver.