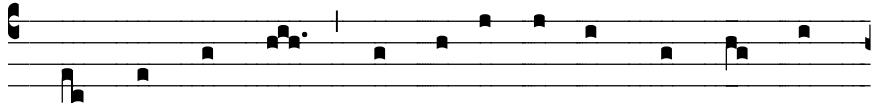
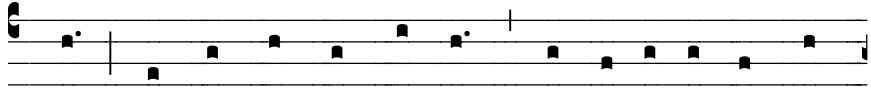


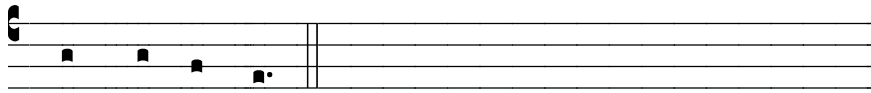
## COMMUNION



Christ loves his Church, and he sa- cri- ficed him- self for



her so that she could be- come like a ho- ly and un-



touch- a- ble bride.

# NUPTIAL MASS

Gregorian Chant for the  
English Propers of the Mass

Antiphons of the Roman Missal

by

Columba Kelly, OSB

*Sacrae Musicae Doctor*

Monk of Saint Meinrad Archabbey

--pre-publication release--

Text: © 1989 ICEL All Rights Reserved.

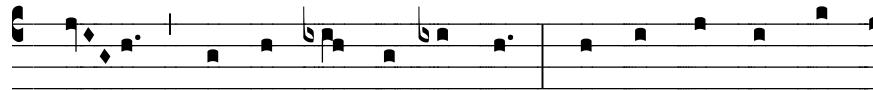
Music: © Saint Meinrad Archabbey. All Rights Reserved.

# NUPTIAL MASS

## INTROIT



1. May the Lord send you help from his ho-ly place and from



Zi- on may he watch o-ver you. May he grant you your



heart's de- sire and lend his aid to all your plans.

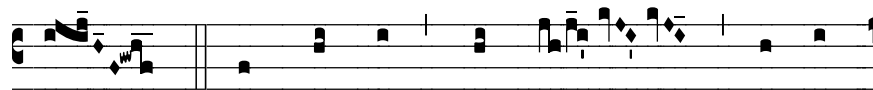
## GRADUAL



Your wife shall be like a fruit-ful vine



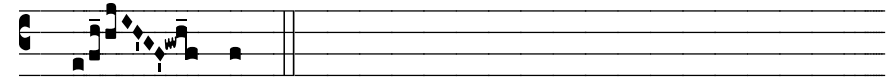
in the heart of your house,



∩ your child-ren like shoots of the



o- live a- round your ta-



ble.

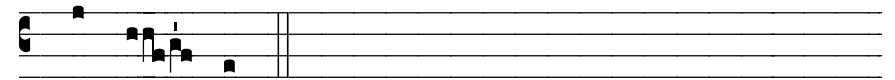
## GOSPEL ACCLAMATION



8. Al- le- lu- ia, al- le- lu- ia, al- le- lu- ia. ∩ From his



ho- ly place may he send you help, and give you support



from Zi- on.